

ClearView™

Multifocal IOL



Embrace life with greater spectacle independence

The ClearView™ Multifocal intraocular lens implant for the
treatment and correction of cataracts and presbyopia



Live life with a ClearView™

Is ClearView™ right for you?



Are you hampered
by blurred vision or
losing contrast?



Do you struggle to
read or find yourself
reading less?



Do you use reading
glasses or own several
pairs of spectacles?



Are you tired of your
contact lens regime?



Does your eyesight
dictate your lifestyle?

Improving your lifestyle

The aging process is one thing that no one can stop, and as a consequence, your eyesight gradually deteriorates.

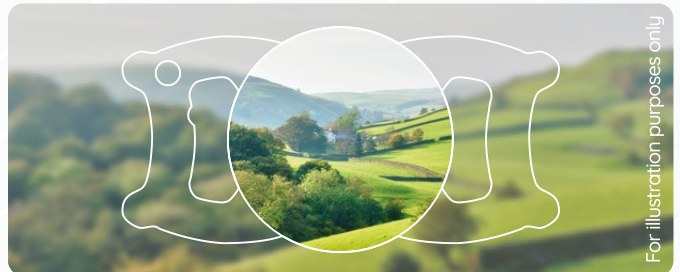
This can manifest itself in many ways, whether it is the onset of presbyopia or cataracts, coupled with possible existing conditions such as **myopia** and **hyperopia** and for you it all leads to frustration.

You want to stay active in your life; however, your range of vision can slow you down. Therefore, you turn to options such as contact lenses and spectacles for a solution. Or, like many people, you may not have addressed the problem yet and so have to compromise your lifestyle.

This no longer needs to be the case. Advancements in eye surgery and the **latest generation of intraocular lenses (IOLs)** allow your eye surgeon to offer options that will help you get on with living life, providing spectacle/ contact lens independence. The **Lenstec ClearView™** is one of the options available.

Do you live with cataracts?

Cataracts are a common eye condition. With age the natural lens changes, can become cloudy and vision may become impaired.



For illustration purposes only

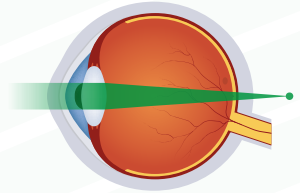
This can be corrected by removing the natural lens and replacing it with an artificial one, such as the ClearView™

Why you might require intraocular lens implants...



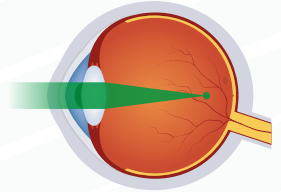
Presbyopia

This age related condition is where the human eye loses the ability to focus on near objects, making it difficult to read and complete day to day tasks.



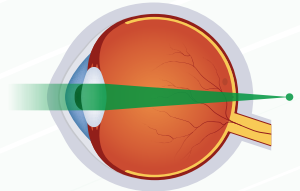
Myopia (Short sightedness)

This is when the image is focused in-front of the retina rather than directly on its surface, resulting in blurred distance vision.



Hyperopia (Long sightedness)

This is when the image is focused behind the retina rather than directly on its surface, resulting in blurred near vision.



There is an option... **ClearView™** 
Multifocal IOL

The ClearView™ premium intraocular lens is designed to mimic the natural lens achieving excellent distance, intermediate and near vision, leading to **greater spectacle independence**.

Innovation and accuracy by design

Bi-Aspheric lenses mimic the natural focusing ability of the human eye. These lenses are used in high-end binoculars and cameras because they allow wider peripheral vision, visual range and depth of focus, creating the clearest of images.

Combined with **micro-precision optics**, manufactured with up-to 300% tighter tolerances than industry standard, the ClearView™ intraocular lens provides an enhanced and accurate optic, resulting in a clearer focus for near, far and mid-range vision.

Notes:

ClearView™ 2
Multifocal IOL

ClearView™ 3
Multifocal IOL

.....

.....

.....

.....

.....

.....

.....

.....

.....

.....



Read more at...

 Visit [lenstecuk.com](https://www.lenstecuk.com)

 Search [LenstecUK](#)

Your clinic: